

# Velox Footpedal Setup Guide

This document is a quick reference guide for setting up footpedals.

Footpedals need associated software to assign the pedals to keyboard keys, which the manufacturer may include. We generally suggest that users purchase X-keys pedals, as Infinity pedals have a more restricted firmware and limited software support.

## Key Assignment

Velox does not have native support for footpedals, instead requiring the footpedals to be assigned to keyboard function keys, necessitating the use of manufacturer-provided, or third-party software. The following keys are used in the *Transcription* menu to listen to dictated audio.

Name	Function	Shortcut
Rewind	Go back 2 seconds.	F6
Fast-forward	Go forward 2 seconds.	F7
Play / Pause	Toggle between playing and pausing.  Will go back by 1 second before playback.	F8

Note that play/pause is a toggle; this will cause problems with any pedal mapping software that only features global toggle options.

## Notes on Mac

**We do not have any known software options for Infinity Pedals on Mac.** We would advise users to take caution before purchasing an Infinity Footpedal on Mac, unless you have a known working software solution.

With the release of MacOS 15 (Catalina), 32-bit applications are no longer supported. This made many older tools we used for footpedal setup unavailable, on top of an already small application pool.

When connecting to a Mac, note that privacy settings will not allow the screen to be seen initially, or control enabled, requiring the user to access their settings first.

- 1) Open the Apple menu in the top-left of the screen, and select “System Settings”
- 2) Open “Security & Privacy”
- 3) Select “Accessibility” from the list, then check-off ConnectWise Control Client. The user will be required to enter their computer credentials to approve this change. (If the user cannot find ConnectWise Control Client, or if the option is not there, ask the user to press the “+” symbol and select the application from the Downloads folder.)
- 4) Select “Screen Recording” from the list and check off ConnectWise Control Client. (If the user cannot find ConnectWise Control Client, or if the option is not there, ask the user to press the “+” symbol and select the application from the Downloads folder.)
- 5) You should be able to see the screen and control the Mac computer.

If you do not have access to the screen or controls after successfully following the above steps, try making a brand new session.

## X-keys Pedals

X-keys pedals include their own software, making setup much easier. The X-keys software allows pedal configuration to be saved directly to the pedal, turning it into a plug-and-play controller; meaning the pedal does not need to be set up on the same device it is being used on. This can be useful on unsupported OS versions.

### Windows & MacOS 16+

X-keys pedals include their own software. This makes setup quite simple:

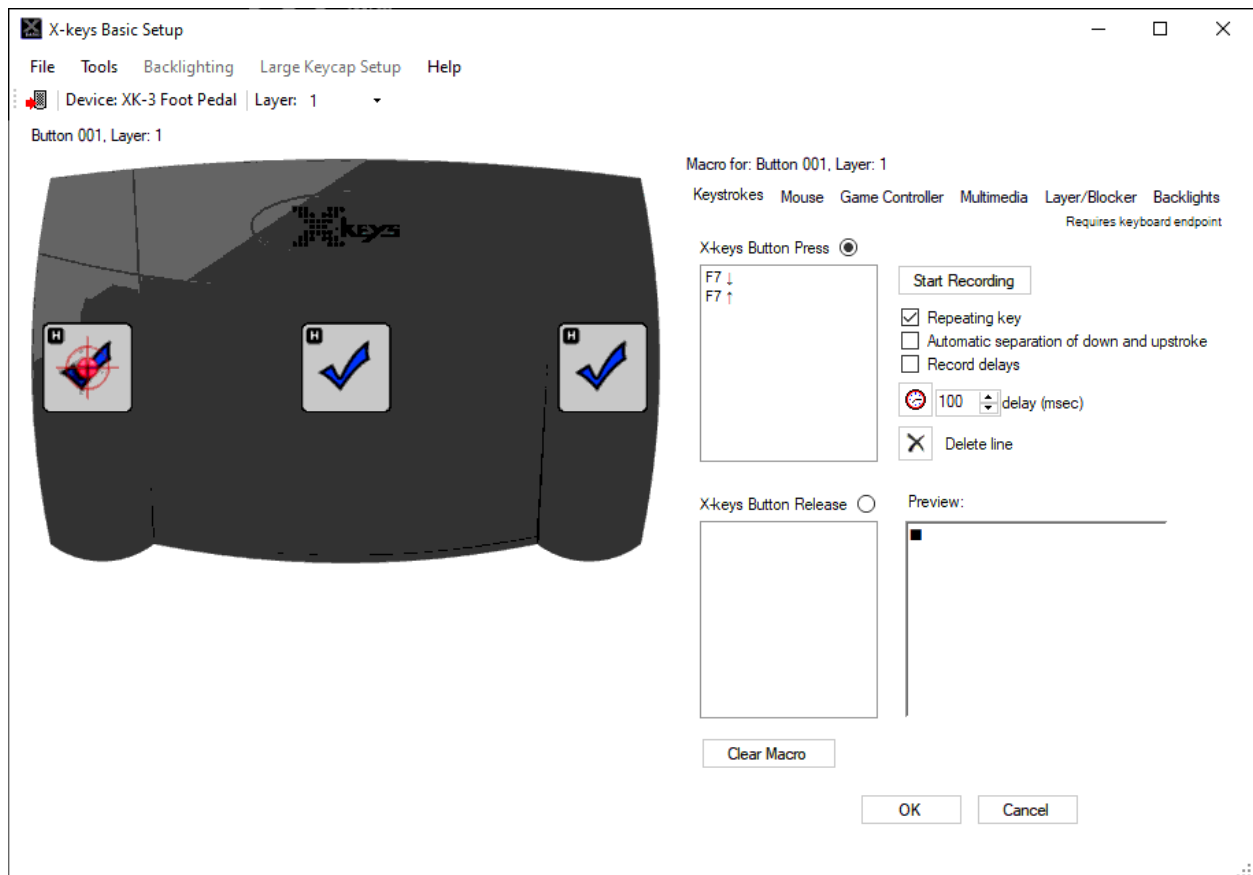
- 1) Download X-keys Basic Setup (for Windows), or X-keys for Mac (<https://xkeys.com/software.html>)
- 2) Run X-keys. Ensure the pedal is plugged in.
- 3) Choose a pedal to assign from the visual indicator on the left.
- 4) Select ‘Begin Recording’ and press a key to assign. Then click ‘Stop Recording’. Repeat these two steps until all keys are assigned.
- 5) From the top bar, select File > Save to Device.

### MacOS 14 or older

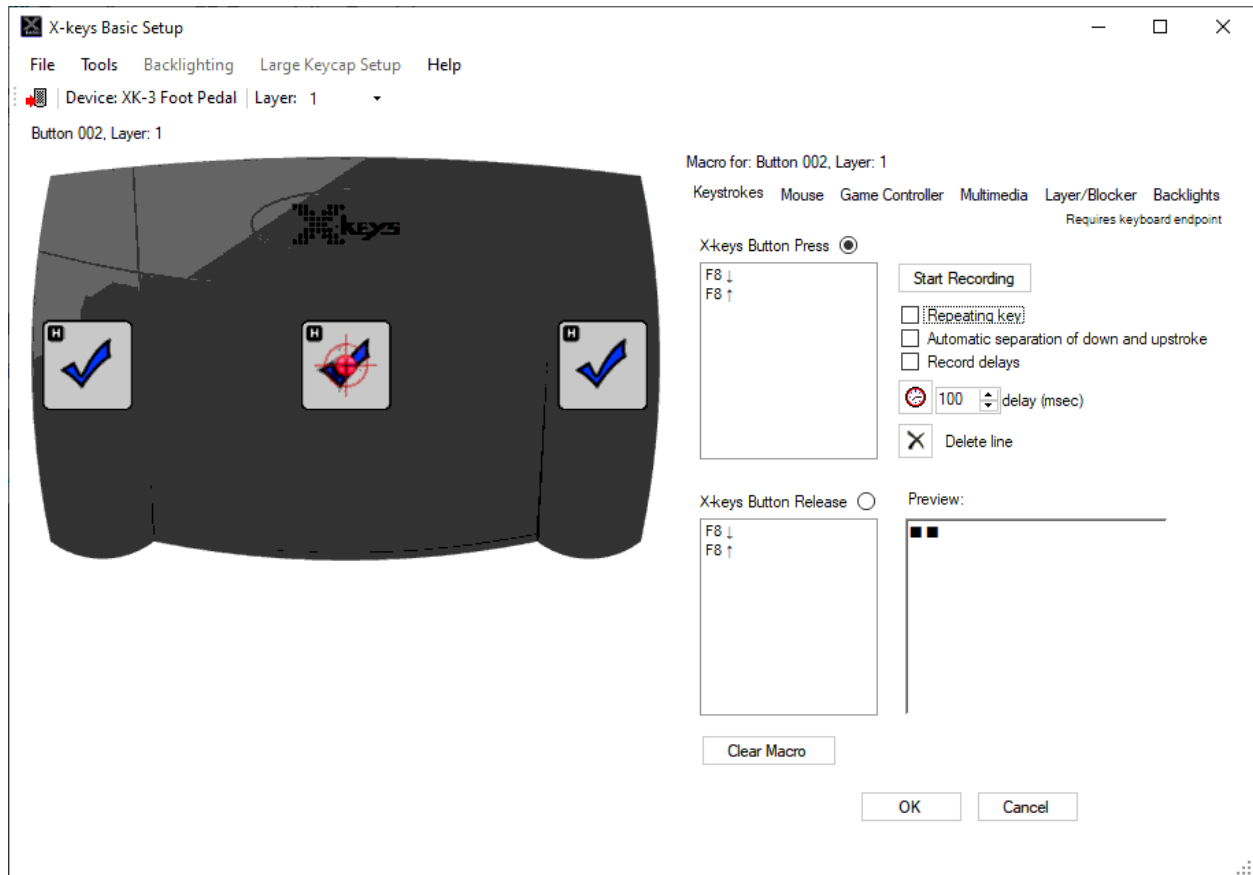
Options include:

- a) Use MacroWorks to set up the footpedal natively:  
(<https://youtrack.veloximaging.net:8443/issue/RIS-1373>)
- b) Set up the X-key pedals on a different computer, and save your config directly to the pedal. The pedal can now be connected to the Mac and used with the saved config.
- c) For MacOS 12 or older, use Keyboard Maestro.

## Suggested Setup



Suggested setup for Rewind. Note the function will 'repeat' when held down, as the "repeating key" option is selected.



Suggested setup for Play/Pause. This will play the audio while the button is held down, and stop the audio when released. If you would like this function to TOGGLE instead, remove the “X-keys button release” assignments.

## Infinity Pedals

### Windows

Pedable is the only known free solution for Infinity Footpedals.

**Note:** Pedable cannot set up toggle functions.

- 1) Download Pedable (<https://www.nch.com.au/footpedal/index.html>)
- 2) Run Pedable. Ensure the pedal is plugged in.
- 3) Select which pedal you'd like to bind, then assign a hotkey. Repeat for each pedal.
- 4) Check the user options to ensure everything is set up properly (i.e. run on start)

## MacOS

**We do not have any known software options for Infinity Pedals on Mac.** We would advise users to take caution before purchasing an Infinity Footpedal on Mac, unless you have a known working software solution. Some potential alternatives include:

- *(untested)* Running a Windows VM on the Mac.
- *(untested)* Using 'Karabiner-Elements' keyboard customizer software to assign controls.
- *(untested)* Using other, untested software tools.
- Using an X-keys footpedal instead.